

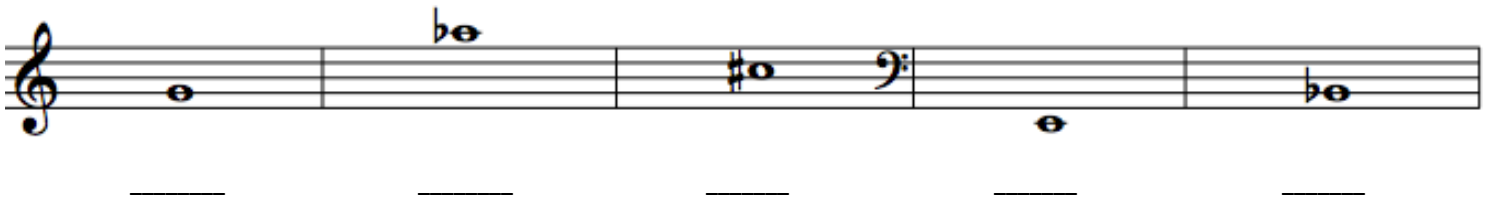
Name: _____

Music Theory Placement Exam

This exam will help determine your theory class at the Young Artists Harp Seminar. Please answer as many questions as you can, but don't worry if you do not know some of the material!

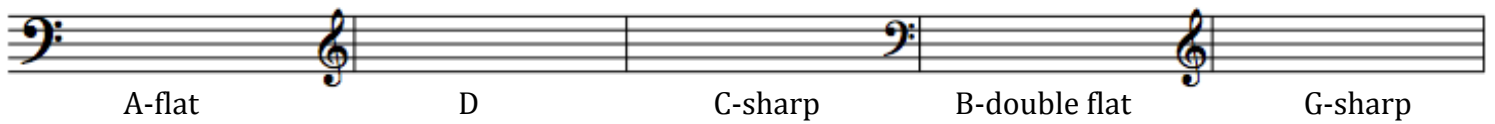
Part I. Pitches and intervals

1. Write the name of each pitch, including accidentals.



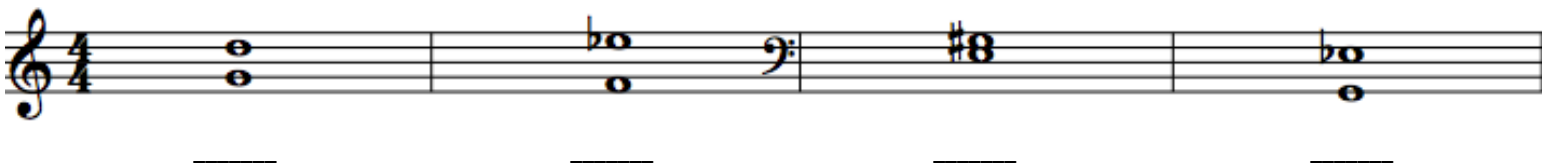
A musical staff with a treble clef and a key signature of one flat. The staff is divided into five measures, each containing a single note. The notes are: C4 (middle C), Bb4 (B-flat), C#4 (C-sharp), E4 (E), and Bb4 (B-flat). Below each measure is a horizontal line for the answer.

2. Notate the pitch within the staff, including accidentals when applicable



A musical staff with a bass clef and a key signature of one flat. The staff is divided into five measures, each containing a single note. The notes are: A-flat, D, C-sharp, B-double flat, and G-sharp. Below each measure is a horizontal line for the answer.

3. Label each interval, including whether it is minor, major, or perfect



A musical staff with a treble clef and a key signature of one flat. The staff is divided into four measures, each containing two notes. The intervals are: C4 and E4, Bb4 and C4, C#4 and E4, and Bb4 and C4. Below each measure is a horizontal line for the answer.

4. Notate the interval indicated **above** the given pitch

A musical staff with six measures. Each measure contains a given pitch and an interval above it. The intervals are labeled below the staff: P4, M2, m3, M6, P5, and Aug4.

5. Notate the interval indicated **below** the given pitch

A musical staff with six measures. Each measure contains a given pitch and an interval below it. The intervals are labeled below the staff: m6, dim5, m3, M7, P5, and M3.

Part II. Key Signatures

1. Write the name of the key signature indicated

A musical staff with four measures, each showing a key signature. The first measure is treble clef with three sharps (F#, C#, G#). The second measure is treble clef with two flats (Bb, Eb). The third measure is bass clef with two flats (Bb, Eb). The fourth measure is bass clef with three sharps (F#, C#, G#). Below each measure is a blank line for the answer.

2. Write the key signature for the following keys

A musical staff with four measures. Each measure contains a key name. The keys are: E-flat Major, c-sharp minor, A Major, and f-sharp minor.

3. Write the pedal diagram for the following keys



A flat Major

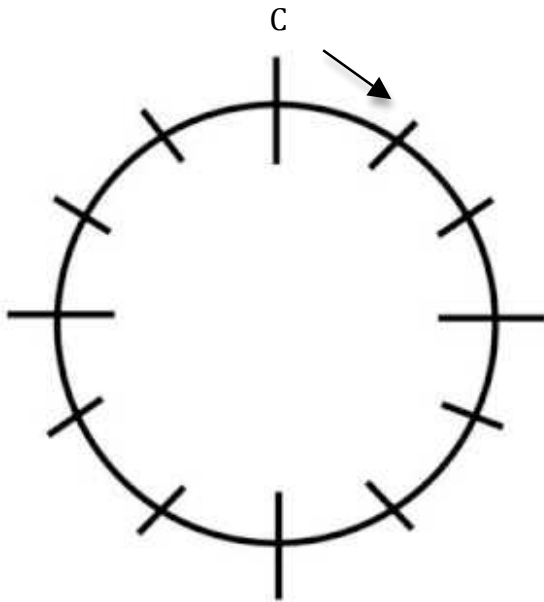


B minor



C sharp Major

4. Fill in the correct order of the circle of 5ths



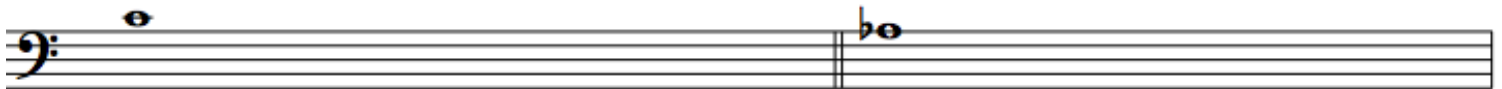
Part III. Scales and chords

1. Write the scale of each given key. Use accidentals, not key signatures



E Major (ascending)

f harmonic minor (ascending)



c natural minor (descending)

A-flat Major (descending)

2. Label each chord quality.

3. Notate each chord indicated, using accidentals when needed.

f-sharp minor D Augmented E-flat Major c diminished b minor

Part IV. Rhythm

1. Write the note for each value indicated

Half note 16th note Dotted quarter note 8th rest

2. For each time signature, write the note value that corresponds to the beat duration

4 6 2
 4 1 beat = _____ 8th notes 8 1 beat = _____ 16th notes 2 1 beat = _____ half notes

3. What time signature is the following example in?